

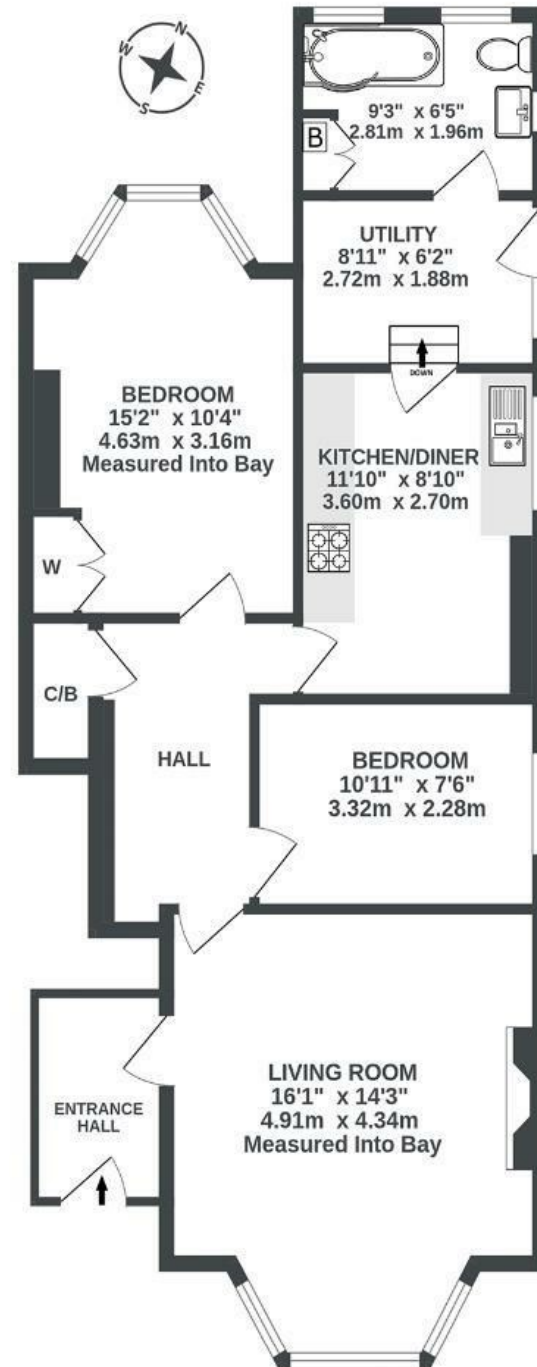
Lilymead Avenue

TOTTERDOWN

APPROXIMATE FLOOR AREA
66.9 SQM / 720 SQFT



GROUND FLOOR
(ENTRANCE HALL NOT INC IN TOTAL SQ.M)
720 sq.ft. (66.9 sq.m.) approx.



Illustrations are for reference purposes only, measurements are approximate, not to scale.

~~Boardwalk~~

Lilymead Avenue

, BRISTOL



£365,000



2 Bedrooms



BS4 2BX



1 Bathrooms

"Lilymead is an amazing community, a real neighbourhood, everyone knows each other and cares. The views across Bristol and out towards Ashton Court are unmatched, in summer we get the most stunning sunsets and soak up the last bit of sun in Perrets Park. With bruhaha and Southside bar less than 5 mins away we had plenty of evening spots but our home has mainly been the perfect nest to start our family."

